



ARCTIC KINGDOM



POLAR BEARS IN THE CANADIAN ARCTIC

The Complete Guide to Polar Bear Viewing

CONTENTS

04	Experience the Majestic Polar Bear
06	The Experience: Getting Face-to-Face with Polar Bears
08	Best Times of Year to See Polar Bears
12	Best Places to See Polar Bears
16	How to See Polar Bear Mothers & Cubs
18	Other Wildlife
22	Polar Bear Photography
24	Our Guides
26	Frequently Asked Questions
28	Accommodations
32	Polar Bear Trips



Photo: David Briggs

EXPERIENCE THE MAJESTIC POLAR BEAR

After almost twenty years of crafting and leading adventures in the Arctic, we are still humbled and inspired by each and every polar bear encounter.

Whether it is on tundra, sea ice or swimming in the Arctic Ocean, sightings of these majestic animals continue to take our breath away. That is why we are committed to providing amazing opportunities for travellers from around the world to view and photograph polar bears while having the experience of a lifetime in one of the most unique and spectacular places on the Earth – the Canadian Arctic.

Arctic Kingdom is the global leader in land-based travel to the Canadian Arctic. We are the only tour operator in the world to offer polar bear tours nearly year-round. With trips from March to November, in every season, and in destinations across the Canadian Arctic, you can be sure to find the right polar bear viewing experience for you.



Photo: David Briggs

Icons of the North

Polar bears, or nanuk in Inuktitut, have always been icons of the Arctic. They are one of the most popular animals that guests want to see when travelling to the far North. The largest carnivores that live on land, these enormous white bears draw in travellers from around the world for viewing and photography. With their habitat constantly changing, there is no better time to plan a trip to the Arctic for opportunities to see them.



Photo: David Briggs

Polar bears in the Canadian Arctic

Canada is home to approximately 60 per cent of the world's polar bear population. Their habitat in Canada ranges from James Bay in the south to Ellesmere Island in the north, and east to west from Labrador to the Alaskan border.

Some of the best places to see polar bears are away from crowds, from ground-level on tundra and ice, throughout the spectacular territory of Nunavut – including Baffin Island. The vast, untouched landscapes, majestic icebergs and glaciers of the region are stunning backdrops for polar bear encounters. Chances to witness incredible natural phenomena such as the Northern Lights or the Midnight Sun turn bucket list experiences into lifetime memories.



THE EXPERIENCE

Getting Face-to-Face with Polar Bears

We believe polar bear viewing is best done from ground level. The lower vantage point of being on the ground allows for incredible and dramatic photography. For wildlife enthusiasts and photographers looking for intimate encounters in the wild, there is no better way to experience these majestic animals.

Imagine walking alongside and gazing into the eyes of a polar bear at eye-level. The emotional experience of such an encounter is raw and incomparable. It is truly transformative for travellers of all ages. It is also something you can't get from a tundra buggy, cruise ship or other experiences that involve looking down on wildlife from above.

We want to ensure our travellers only have the most amazing, unique and memorable wildlife experiences. Offering land-based polar bear tours in the Canadian Arctic nearly year-round allows us to do just that.

BEST TIMES OF YEAR

To See Polar Bears

Various regions throughout Nunavut offer opportunities to view and photograph polar bears almost all year long. No matter the time of year you want to travel, there's a polar bear tour for you!

While we run polar bear tours from March to November, the Canadian Arctic is always changing; different seasons bring a variety of incredible experiences and weather conditions. The right season for you to travel will depend on the goals for your polar bear adventure, what you want to experience and how you want to explore.



Photo: David Briggs

March & April



Photo: David Briggs

Though Canada's high Arctic is seldom explored in the early spring, Qikiqtarjuaq, on Baffin Island, offers rare opportunities to see polar bears, and possibly cubs, as they roam the sea ice and climb majestic icebergs. Some exceptional and award-winning polar bear photography have come from our expeditions here during the early spring. Clear skies at this time of year also provide great chances to witness the Northern Lights at night.

At this time of year, travellers stay at a Tented Safari Camp set on more than 2 m (6 ft) of solid sea ice and explore on daily guided snowmobile and qamutik (traditional Inuit sled) trips. More adventurous travellers may enjoy the unique polar bear and Northern Lights viewing opportunities in March and April, despite the extreme cold.

HIGHLIGHTS

- Chances for rare polar bear and cubs sightings
- Vast sea ice and towering icebergs
- Spectacular Northern Lights at night

May & June



Photo: Nathalie Lasselin

Travellers can enjoy mild weather and 24-hour sun on polar bear tours in the spring. Experience the Midnight Sun and the classic spring floe edge on trips at this time of year. Also known as "the line of life", the floe edge is where the land-fast ice meets the open water of the Arctic Ocean in Baffin Bay and Lancaster Sound. This is one of the few places where Arctic marine mammals, including polar bears and narwhal, come to congregate.

At this time of year, travellers stay at a Premium Safari Camp set on more than 2.0 m (6 ft) of solid sea ice and explore by snowmobile and qamutik (traditional Inuit sled) on daily journeys to the floe edge and other local attractions. Travellers can enjoy activities including kayaking and snorkeling, possibly within the presence of whales. This time of year is great for those looking for opportunities to view polar bears as well as the elusive narwhal, and other Arctic wildlife.

HIGHLIGHTS

- Chances to see polar bears on sea ice
- The Midnight Sun
- Experience the classic spring floe edge
- Opportunities to view narwhal, beluga, bowhead whales, sea birds and other wildlife at the floe edge

LOCATION

Qikiqtarjuaq, Nunavut

AVERAGE TEMPERATURE

-40°C to -20°C
-40°F to -4°F

DAYLIGHT HOURS

11 – 16 hours

TRIPS

- Spring Polar Bears & Icebergs of Baffin Photo Safari (pg. 33)

LOCATION

Arctic Bay and Pond Inlet, Nunavut

AVERAGE TEMPERATURE

-2°C to +10°C
+28°F to +50°F

DAYLIGHT HOURS

24 hours

TRIPS

- Narwhal & Polar Bear Safari (pg. 35)
- Great Migrations of the Northwest Passage (pg. 36)



July & August



wildlife including walrus and bowhead whales. The long days and seemingly-endless sunsets allow for dramatic photography and extended hours of adventure. Activities can include kayaking, hiking and more.

At this time of year, travellers stay in a Tented Safari Camp or Premium Safari Camp set on land. This season is ideal for families and travellers that prefer unique experiences in milder weather conditions.

HIGHLIGHTS

- Opportunities to see polar bears on land and swimming.
- Chances to view walrus, bowhead whales, seals and other Arctic wildlife
- Experience icebergs and glaciers
- Arctic exploration by land and boat
- The Midnight Sun

For those that enjoy warmer weather, summer is a great time to view polar bears in the Arctic. Temperatures can reach as high as 20°C (70°F) in August and travellers can experience the Midnight Sun at this time of year. Explore the Arctic by land and boat, and get the chance to see polar bears swimming amongst icebergs, as well as other Arctic

LOCATION

Igloolik and Qikiqtarjuaq, Nunavut

AVERAGE TEMPERATURE

+5°C to +20°C
+41°F to +70°F

DAYLIGHT HOURS

18 - 24 hours

TRIPS

- Kings of the Arctic (pg. 37)
- Polar Bears & Glaciers of Baffin Island (pg. 38)

October & November



Photo: Françoise Gervais

yearling cubs, as well as chances to view polar bears at night. After a day of discovery and polar bear viewing, one may get the chance to witness spectacular Northern Lights at night.

At this time of year, travellers stay in a cabin complex, located on the tundra, accessible only by air and surrounded by an unobtrusive electric fence. On the west coast of Hudson Bay, our exclusive camp location is unmatched for travellers looking for close-up polar bear photography as the bears roam the tundra waiting for the first sea ice to form.

HIGHLIGHTS

- Opportunities to photograph polar bears up-close from ground level
- Chances to view Arctic wildlife including Arctic fox, Arctic hare, Snowy Owls, and more
- The Northern Lights at night

Autumn in the Arctic provides great opportunities to view polar bears up-close, from ground-level, on the tundra. On the west coast of Hudson Bay, polar bears roam the tundra as they wait for the first sea ice to form at this time of year. Travellers can get opportunities to experience and photograph young and mature males, females, and even

LOCATION

North of Churchill, Manitoba, near Arviat, Nunavut

AVERAGE TEMPERATURE

-20°C to -5°C
-4°F to +23°F

DAYLIGHT HOURS

8-10 hours

TRIPS

- Polar Bear Migration Fly-In Photo Safari (pg. 39)

THE BEST PLACES

To See Polar Bears

While polar bears can be seen throughout the Canadian Arctic, depending on the time of year, there are ideal locations for viewing these majestic animals up-close. Arctic Kingdom trips follow the migration patterns of polar bears and other Arctic wildlife to provide incredible opportunities to spot and photograph them in their natural habitat.



Photo: Françoise Gervais

ARVIAT, NUNAVUT

This historical hunting ground is an optimal spot for observing polar bears in the autumn months.

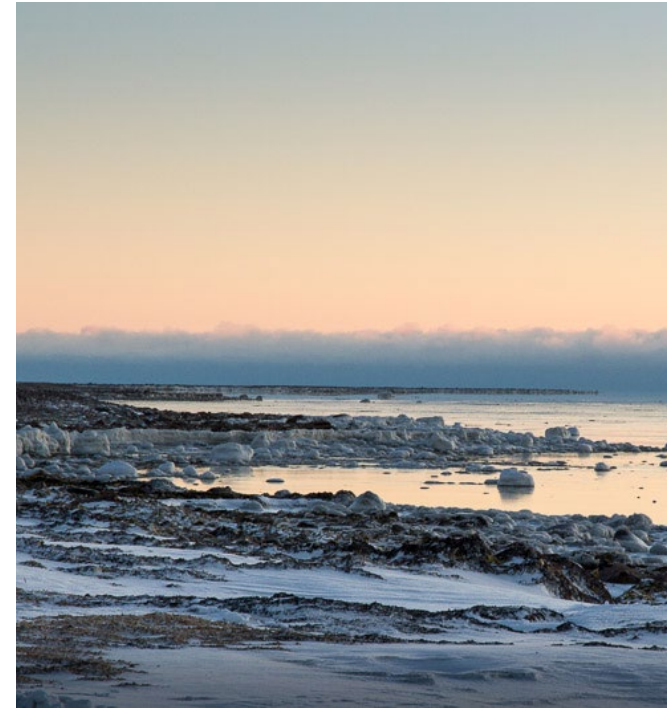


Photo: David Briggs

Located south of the town, along the west coast of Hudson Bay, the historical hunting ground of the people of Arviat is an optimal spot for observing polar bears in the autumn months. This region is just north of Churchill, Manitoba. Arctic Kingdom works closely with the people of Arviat and has local Inuit guides assist with polar bear viewing encounters.

Formerly known as Eskimo Point, Arviat is a traditional Inuit community with rich history, and strong artistic and musical traditions. It is the home of renowned Inuit performers Charlie Panigoniak and Susan Aglukark, as well as talented carvers and seamstresses. The local carving stone is a metamorphic rock that geologists say is harder than steel! Carvings made of this compromising material are stylistically unique to Arviat artists, often depicting themes of family, maternity and humanity.

TRIPS

- Polar Bear Migration Fly-In Photo Safari (pg. 39)

QIKIQTARJUAQ, NUNAVUT

Inhabited predominantly by Inuit, Qikiqtarjuaq is often called the iceberg capital of Nunavut.

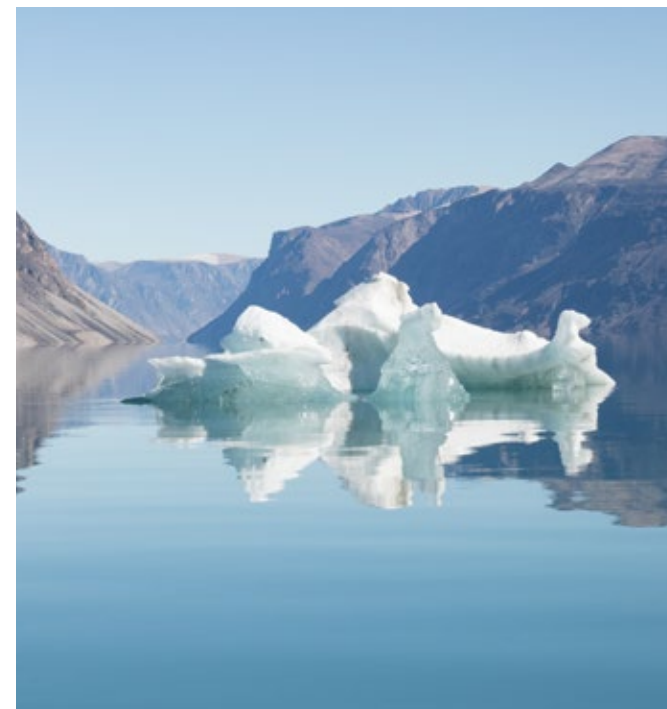


Photo: David Briggs

Qikiqtarjuaq means “the big island” in Inuktitut. Called “Qik” for short by the people of Nunavut, the region is predominately inhabited by Inuit. Located north of the Arctic Circle, the hamlet is renowned for icebergs (it’s often called the iceberg capital of Nunavut), as well as glaciers, bowhead whales, and the presence of polar bears (and possibly cubs) on the sea ice during early spring, and on land and swimming the Arctic Ocean in the summer months. The community also provides access to the northern end of Auyuittuq National Park, one of the most remote parks in Canada.

TRIPS

- Spring Polar Bears & Icebergs of Baffin Photo Safari (pg. 33)
- Polar Bears & Glaciers of Baffin (pg. 38)

ARCTIC BAY, NUNAVUT

Arctic Bay is the northern-most destination visited by travellers on our Arctic Safaris.



Photo: Michelle Valberg

Located on the northwest tip of Baffin Island, bordering Lancaster Sound and the famed Northwest Passage, Arctic Bay is a vibrant, traditional community. It has been inhabited by nomadic Inuit for almost 5,000 years, and Inuit make up 95 per cent of the population.

Arctic Bay’s Inuktitut name, ‘Ikpiarjuk’ means ‘the pocket’. This refers to the way the community is surrounded by protective hills on three sides. The steep cliffs and sheltered shores also provide nesting habitats for many bird species. The floe edge in this region is world-renowned as one of the most prolific wildlife areas in the Arctic, with the annual migration of beluga and narwhal to their summer feeding ground occurring in May and June. This is one of the few places where all Arctic marine mammals come to co-mingle, providing chances to view polar bears on the sea ice, and other wildlife including narwhal.

TRIPS

- Great Migrations of the Northwest Passage (pg. 36)

POND INLET, NUNAVUT

The awe-inspiring scenery of Pond Inlet is a mix of mountains, picturesque fiords, inlets, glaciers, and icebergs.



Photo: Françoise Gervais

Pond Inlet is a small, predominantly Inuit community located in the Qikiqtaaluk Region of Nunavut. The hamlet is located on the northern tip of Baffin Island, near the eastern entrance to the Northwest Passage. It is also known in Inuktitut as Mittimatalik, “the place where Mittima is buried”. Although the name remains, the identity of Mittima is a mystery to the present-day people of Pond Inlet. Close to both Tamaarvik Territorial Park and Sirmilik National Park, the awe-inspiring scenery is a mix of mountains, picturesque fiords, inlets, glaciers, and icebergs. With stunning and dramatic landscapes and unique wildlife viewing opportunities at the floe edge, including polar bears and narwhal, Pond Inlet is considered to be one of Canada’s true “jewels of the north”.

TRIPS

- Narwhal & Polar Bear Safari (pg. 35)

IGLOOLIK, NUNAVUT

Igloolik comes alive in the summer months, when the sun never sets.



Photo: David Briggs

North of the Arctic Circle, Igloolik is located between the Canadian mainland and Baffin Island, on a small island in Foxe Basin just off the northeast corner of Melville Peninsula.

Spelled ‘Iglulik’ in Inuktitut, this vibrant community is considered a cultural hub for Inuit, mixing cultural traditions from three regions: Qikiqtaaluk, Kitikmeot and Kivalliq. This little island, inhabited 4,000 years ago, consists of 95 per cent Inuit population. Igloolik comes alive in the summer months, when the sun never sets, with music festivals and circus performances by Artcirq, the only Inuit circus troupe in the world. Foxe Basin is home to the largest walrus herd in Canada, and offers chances to view polar bears in the summer months.

TRIPS

- Kings of the Arctic (pg. 37)

WAPUSK NATIONAL PARK

Wapusk National Park shelters one of the largest known maternity denning areas for polar bears.



Photo: Françoise Gervais

Established in 1996, Manitoba’s Wapusk (Cree for “white bear”) National Park is Canada’s 37th national park, located south of Churchill, Manitoba on the coast of Hudson Bay.

Encompassing a large portion (11,475 km² or 4431 mi²) of the Hudson James Lowlands, the park shelters one of the largest known maternity denning areas for polar bears. It is one of the few places on earth where people can witness newborn polar bear cubs explore their snowy world for the first time.

While it is known for its polar bears, Wapusk National Park is also home to other wildlife including moose, rare birds and the 3,000-strong Cape Churchill caribou herd that live here in the winter.

TRIPS

- Polar Bear Mother & Newborn Cub Photo Safari (pg. 34)

HOW TO SEE POLAR BEAR MOTHERS & CUBS

Witnessing polar bear mothers and cubs is a rare and special experience coveted by photographers and travellers from around the world. Pregnant polar bears will build a den by digging a snow cave and wait for snow to close the entrance to the tunnel. Polar bears are often born in December, and mothers most commonly give birth to twins, but one or three cubs are possible. The mother will nurse the cubs in the den until March or early April after which they emerge into the world. Cubs will continue nursing for at least 20 months and stay with their mother for up to three years as they learn to hunt, feed, swim and survive.*



Observe Newborn Cubs Emerging from Dens

Witnessing newborn polar bear cubs emerge from their dens and taking their first steps in the snow is an incredible sight, though rarely seen. This opportunity is available to only a few dozen people per year, and can be experienced in one of the world's largest polar bear denning area: Wapusk National Park.

You can get your chance on Polar Bear Mother & Newborn Cubs Photo Safari (pg. 34).

View Cubs Exploring Icebergs

Once cubs have emerged from the dens, travellers and photographers also have opportunities to see them with their mothers as they explore the sea ice and climb icebergs near Qikiqtarjuaq on Baffin Island. In March and April, there is a possibility of seeing cubs of various ages, from newborn to yearlings. What makes polar bear cub photographs taken here so special is the landscapes of vast sea ice, towering icebergs and most significantly, the absence of trees and shrubbery that you would typically see below the treeline. Photography of this nature is as awe-inspiring as it is rare.

You can get your chance on Spring Polar Bears & Icebergs of Baffin Photo Safari (pg. 33).

Experience Cubs on Tundra

Cubs spotted in the autumn months are typically yearlings, one to two years old. In October and November, many travellers enjoy photographing interactions between these cubs and their mothers from the comfort of our remote Polar Bear Cabins.

You can get your chance on Polar Bear Migration Fly-In Photo Safari (pg. 39) or ask about our Private Polar Bear Cabin.

OTHER WILDLIFE

To Watch For On Polar Bear Trips

Depending on the time of year and region, travellers to the Canadian Arctic can also have chances to view unique Arctic wildlife including narwhal, sea birds, Arctic fox and more.



Photo: Erik Op de Beeck

Narwhal

When to see them

May and June

Where to see them

At the floe edge of Arctic Bay and Pond Inlet

Trips to see them on

- Great Migrations of the Northwest Passage (pg. 36)
- Narwhal & Polar Bear Safari (pg. 35)



Photo: Peter Hemming

Walrus

When to see them

July

Where to see them

Iglolik

Trips to see them on

- Kings of the Arctic (pg. 37)



Beluga

When to see them

May and June

Where to see them

At the floe edge of Arctic Bay

Trips to see them on

- Great Migrations of the Northwest Passage (pg. 36)



Photo: Todd Mintz

Seals

When to see them

May to August

Where to see them

At the floe edge of Arctic Bay and Pond Inlet, Igloolik, and Qikiqtarjuaq

Trips to see them on

- Great Migrations of the Northwest Passage (pg. 36)
- Narwhal & Polar Bear Safari (pg. 35)
- Kings of the Arctic (pg. 37)
- Polar Bears & Glaciers of Baffin (pg. 38)



Photo: David Briggs

Bowhead Whale

When to see them

July and August

Where to see them

Igloolik and Qikiqtarjuaq

Trips to see them on

- Kings of the Arctic (pg. 37)
- Polar Bears & Glaciers of Baffin (pg. 38)



Photo: David Briggs

Arctic Fox

When to see them

October, November, and March

Where to see them

Arviat and Wapusk National Park

Trips to see them on

- Polar Bear Mother & Newborn Cubs Photo Safari (pg. 34)
- Polar Bear Migration Fly-In Photo Safari (pg. 39)



Seabirds

When to see them

May to August

Where to see them

At the floe edge of Arctic Bay and Pond Inlet, Igloolik, and Qikiqtarjuaq

Trips to see them on

- Great Migrations of the Northwest Passage (pg. 36)
- Narwhal & Polar Bear Safari (pg. 35)
- Kings of the Arctic (pg. 37)
- Polar Bears & Glaciers of Baffin (pg. 38)

POLAR BEAR PHOTOGRAPHY

Our polar bear tours in the Canadian Arctic provide remarkable opportunities for unique polar bear photography in their natural habitat. Our trip participants range from professional and hobby photographers to guests capturing memories on cell phone cameras. Our Expedition Leaders are experienced and award-winning photographers themselves, and can provide tips and assistance on our trips.

Top Photography Tips from our Expedition Leaders

1. Camera Gear

For serious photographers, with the variety of wildlife and scenery available to shoot, it's a good idea to bring a telephoto lens (minimum of 300mm), a mid-range zoom (70-200mm), a tele-converter (1.4x or 2x), and a wide angle lens (24mm or less). Other guests have success with point-and-shoot cameras. Many photographers also find bringing a full-sized tripod or monopod beneficial. We suggest becoming familiar with the settings and features of your camera, and abilities of your lenses, before your trip.

2. Protect from weather

The weather in the Arctic can be unpredictable. Depending on the season, we recommend bringing snow or rain covers, and heavy duty plastic bags to wrap your gear in the case of extreme weather.

3. Pack extra batteries, chargers & memory cards

While most lithium camera batteries can handle the cold, you may notice they have a shorter life span. Plus, with spectacular sights at every turn, and movement of polar bears, you will find yourself snapping more shots than usual. Don't forget to pack extra batteries and remember to charge them. It's a good idea to keep one battery in your camera, a spare keeping warm tucked in an inner pocket, and a third charging in camp.

4. Adjust for snow

One of the challenges of shooting in the Arctic, especially on the sea ice, is the amount of white. Often, cameras will underexpose the vast, harsh whiteness of snow and white animals, turning it grey in the photo. There are a few ways to adjust your camera to avoid this including adjusting the Exposure Value by +1/3 to +1 1/3, compensating the exposure by slowing the shutter speed, using a gray card, or bracketing.

Falling snow can add drama and interest to photography, but can also draw focus instead of your subject. Remember to manually focus to keep your subject the star.

OUR GUIDES

All of our Expedition Leaders are experienced in guiding polar expeditions, with a focus on Canadian Arctic wildlife and habitat. On all of our polar bear tours in Nunavut, our expedition teams include seasoned local Inuit guides. They have spent their lives in the Arctic, and know the land and wildlife well. Along with our Expedition Leaders, our Inuit guides' lifetime of knowledge and expertise is monumental for the success of our polar bear viewing programs.

We endeavor to provide exceptional experiences in the Arctic in safety and comfort. You can rest assured that our expedition team is highly trained and knowledgeable, and dedicated to bringing you the polar bear experience of a lifetime.

Meet our Expedition Team at ArcticKingdom.com





FREQUENTLY ASKED QUESTIONS

How many bears will I see?

The opportunities to view bears vary depending on the trip and time of year. For example, on Polar Bear Migration Fly-In Photo Safari (pg. 39) you can see up to 10 polar bears a day, but there may also be days without any bear sightings. On our floe edge safaris, Narwhal & Polar Bear Safari (pg. 35) and Great Migrations of the Northwest Passage (pg. 36), you can expect to see an average of three to five polar bears a week.

Our local Inuit guides have lived amongst polar bears for generations and know the land and animal behaviour well. Their guidance, coupled with the expertise of our Expedition Leaders, allow us to craft our trips for the best possible wildlife viewing opportunities. That said, wildlife is unpredictable and polar bear sightings are not guaranteed.

How close can I get to the bears?

Following the Wildlife Policy of Nunavut, and for the safety of our guests and wildlife, we ensure all participants remain at a minimum distance of 100 meters (approx. 300 feet) from polar bears in the wild. Arctic Kingdom Expeditions Leaders and Inuit guides are highly trained and experienced in polar bear safety and de-escalation.

Will I see the Northern Lights?

The Canadian Arctic provides opportunities to see the Northern Lights from autumn to early spring. You can get the chance to view them on Spring Polar Bears & Icebergs of Baffin Photo Safari (pg. 33), Polar Bear Mother & Newborn Cubs Photo Safari (pg. 34), and Polar Bear Migration Fly-In Photo Safari (pg. 39).

How active are Arctic Kingdom polar bear tours?

We want our guests to enjoy the wonders of the North! The majority of our Arctic adventures have been designed so guests can participate and enjoy regardless of your age or activity level. Some trips are also great for families. Many trips include riding in qamutiks (traditional sleds pulled by snowmobiles) or riding in boats. While our trips may include optional activities such as hiking, kayaking or snorkeling, participants can choose how much or how little to do. Our Arctic Travel Advisors are happy to help you choose which experience is right for you if you have any concerns.

What do I need to pack?

The clothing and gear required varies depending on the trip, location and time of year. We want you to enjoy your polar bear tour in comfort, no matter what Mother Nature brings, and will send you a packing list specific to your trip.

We realize that good quality Arctic-worthy equipment is expensive to purchase all at once, and may not be necessary for a one-time Arctic adventure. That's why we offer a top-of-the-line Polar Clothing Rental Package. Our Arctic Travel Advisors are pleased to advise and provide more information on our Polar Clothing Rental Packages.

ACCOMMODATIONS

Safari Camps, Lodges & Cabins

Keeping you warm, safe and dry. Our comfortable accommodations allow you to enjoy your Arctic adventures in style.



SAFARI CAMPS

Our camps are inspired by the traditional camps of Inuit, polar expeditions, and African-style mobile tented safaris. Pioneers of the Arctic Safari, Arctic Kingdom has weaved together traditional and modern technology to provide the best, authentic Arctic experience.

All of our safari camps are spacious and warm, with a central dining and lounge area to dine and relax in, and heated sleep quarters. Positioned on land or sea ice, our Premium Safari Camps and Tented Safari Camps are set up seasonally. At the end of each short season, we dismantle and return them to our local community storage facility, leaving only footprints behind.



Photo: Nathalie Lasselin

Tented Safari Camp

While they may appear like a tented camp from the outside, our Tented Safari Camp continues to surprise and delight our guests with its roomy and warm interiors. The sleep tents include ample standing room, and space for all your cameras and luggage. Located in wilderness, the Tented Safari Camps have shared, eco-style washrooms.

Trips

- Spring Polar Bears & Icebergs of Baffin Photo Safari (pg. 33)
- Kings of the Arctic (pg. 37)

Premium Safari Camp

Our Premium Safari Camp brings elegance and comfort to the Arctic. Spacious and warm, the modern, specially designed Arctic yurt-style camp structures provide an inviting home-away-from-home in some of the world's most remote and breathtaking places. The sleep yurts feature double walls with insulation, large windows and a lockable door. The Premium Safari Camp feature shared eco-style washrooms with hot water sinks and showers.

Trips

- Narwhal & Polar Bear Safari (pg. 35)
- Great Migrations of the Northwest Passage (pg. 36)
- Polar Bears & Glaciers of Baffin Island (pg. 38)



Photo: David Briggs

LODGES & CABINS



Polar Bear Cabins

Rustic, remote and accessible by air, our Polar Bear Cabins rest on the western shores of Hudson Bay. These simple cabins are surrounded by an electric fence, offering a comfortable and safe home in the heart of polar bear country. Allowing for a maximum of eight guests, with four guest cabins featuring en suite washrooms with heated showers, and a central dining/lounge cabin, the Polar Bear Cabins create a private and intimate polar bear viewing experience.

Trips

- Polar Bear Migration Fly-In Photo Safari (pg. 39)



Photo: John E. Marriott

Newborn Polar Bear Cub Lodge

A refurbished naval communications base, the Newborn Polar Bear Cub Lodge stands almost 100 m (300 ft) on top of an old beach ridge, located just south of Churchill, Manitoba. Isolated in the middle of the tundra, the lodge is as self-sufficient as it is "off grid". This rustic lodge provides some of the world's best access to polar bear mothers and newborn cubs in Wapusk National Park in March. The Lodge has single, double or quad rooms available, and features a central lounge with a wood-burning fireplace. A sauna is available, but showers are not, due to the remote location.

Trips

- Polar Bear Mother and Newborn Cubs Photo Safari (pg. 34)

POLAR BEAR TRIPS

We offer polar bear trips in nearly year-round, from March to November. From chances to view mothers and cubs, to sightings of polar bears amongst icebergs, other Arctic wildlife, or even swimming, there are opportunities for incredible encounters in almost every season. Whether you are a professional photographer, family, or traveller looking for a unique adventure, there is a polar bear experience for you.

**all flight packages are subject to change*

***all itineraries are subject to change*



Photo: David Briggs



Photo: David Briggs

SPRING POLAR BEARS & ICEBERGS OF BAFFIN

PHOTO SAFARI

An exclusive opportunity to view polar bears and icebergs on Baffin Island.

Our most adventurous Arctic photo safari brings you into the heart of the high Arctic in early spring, where travellers seldom go. Surrounded by snow-capped mountains and soaring icebergs, experience polar bears close-up in undisturbed splendor as they venture on to the sea ice and climb majestic icebergs. Capture memories of a lifetime with possible sightings of mother and cubs, ice bergs and witness the incredible Northern Lights in the evening.

ITINERARY

Day 1 • Travel to Qikiqtarjuaq, NU from Ottawa, ON. Upon arrival you will be met by your Expedition Team who will transfer you to the hotel for a hot dinner and trip briefing.

Days 2 - 7 • Transfer to camp in the morning on Day 2, travelling by snowmobile and qamutik (traditional Inuit sled) across sea ice. Explore the majestic wilderness on daily adventures by snowmobile and qamutik, as Inuit guides use tradition expertise to locate and help you safely view polar bears, close-up.

Enjoy hot lunches served on the land and gourmet comfort food dinners at camp. View the spectacular Northern Lights at night, conditions permitting.

Day 8 • After a hot breakfast, spend the morning capturing a few last memories and photographs. Return to Qikiqtarjuaq and overnight at the local hotel.

Day 9 • Transfer to the Qikiqtarjuaq airport for your flight to Iqaluit and onward to Ottawa.

DURATION

9 Days / 8 Nights

DEPARTURE DATES

March & April

FLIGHT PACKAGE

Round-trip flights from Ottawa to Qikiqtarjuaq

LOCATION

Qikiqtarjuaq, Nunavut



Photo: Françoise Gervais

POLAR BEAR MOTHER & NEWBORN CUBS

PHOTO SAFARI

Immerse yourself in the world's largest polar bear denning area for one of the most rarely-seen wildlife experiences.

With unique, heated vehicles, this lodge-based expedition provides unprecedented and comfortable access to denning habitats. Enjoy shimmering Northern Lights at night, after days of observing and photographing precious moments between polar bear mothers and cubs.

Be one of the select few to experience the rare opportunity to see newborn polar bear cubs, safely, at a close range. Feel the exhilaration as they take their first steps in the snow as their mothers introduce them to the world.

ITINERARY

Day 1 • Arrive in Winnipeg, Manitoba and settle in to your hotel.

Day 2 • This polar bear adventure begins with an early morning flight to Churchill, MB. Enjoy a town tour and lunch at a local restaurant. Transfer to lodge.

Days 3 - 8 • Spend these days observing polar bear mothers and newborn cubs as they explore their new world. Gain unmatched access to denning habitats in comfort via unique tracked

heated vans, unlike any other polar bear tours. Wildlife viewing and photography, including caribou and ptarmigan, are also possible.

Enjoy a front-row seat of the dancing Northern Lights after dinner.

Day 9 • Transfer back to Churchill and fly to Winnipeg and overnight at the boutique airport hotel.

Day 10 • Depart Winnipeg for home.

DURATION

10 Days / 9 Nights

DEPARTURE DATES

March

FLIGHT PACKAGE

Round-trip flights from Winnipeg to Churchill

LOCATION

Wapusk National Park, Manitoba



Photo: David Briggs

NARWHAL & POLAR BEAR SAFARI

FLOE EDGE SAFARI

Experience the classic spring floe edge and view unique Arctic wildlife and icebergs under the midnight sun.

Travel to the northern reaches of Baffin Island where the sea ice opens up, and marine mammals and other wildlife congregate at the floe edge – also known as the “line of life”. Revel in the stunning landscapes of towering granite cliffs, glaciers and icebergs at our Premium Safari Camp nestled between the majestic mountains of Baffin Island and Bylot Island. Guided by Inuit, journey to the floe edge for days of discovery, possible narwhal watching and the chance to see a variety of sea birds, polar bears, seals and possibly bowhead whales. A Canadian Government designated Signature Experience.

ITINERARY

Day 1 • Upon arrival in Pond Inlet, transfer to your hotel and meet your Expedition Leader for dinner.

Day 2 • After breakfast and a briefing from Parks Canada, travel by snowmobile and qamutik (traditional Inuit sled) to our Premium Safari Camp near the floe edge. Enjoy hot lunches served on the land and gourmet comfort food dinners at camp.

Days 3-6 • Journey to the floe edge to observe wildlife and spectacular landscapes. Take excursions to attractions in the area, including a trip to traditional Inuit hunting grounds, by snowmobile and qamutik. You may also visit

ancient Thule sites, and the Bylot Island Migratory Bird Sanctuary, home to more than 200,000 birds.

Engage in activities both on land and at the floe edge, such as snorkeling and kayaking amongst sea ice and possibly within the presence of whales, weather permitting. Enjoy refreshing glacial melt-water tea.

Day 7 • After breakfast, travel back to Pond Inlet by snowmobile and qamutik. Enjoy your final night in a Pond Inlet hotel.

Day 8 • Transfer to the Pond Inlet airport and fly to Iqaluit and transfer planes for your flight to Ottawa.

DURATION

8 Days / 7 Nights

DEPARTURE DATES

May & June

FLIGHT PACKAGE

Round-trip flights from Ottawa to Pond Inlet

LOCATION

Pond Inlet, Nunavut



Photo: Eric Baccega



Photo: Richard Roth

GREAT MIGRATIONS OF THE NORTHWEST PASSAGE

FLOE EDGE SAFARI

Stimulate all your senses in the region world-renowned as one of the most prolific wildlife areas in the Arctic.

Witness polar bears, and the migration of the beluga and narwhal to their summer feeding grounds — a rare privilege — at the floe edge of Lancaster Sound. Bordering the Northwest Passage, the floe edge of Lancaster Sound is one of the few places where all Arctic marine animals co-mingle. Get the chance to view polar bears, and other Arctic wildlife against the spectacular backdrop of crystalline icebergs and electric blue pack ice formations. Experience the transition of the Arctic from winter to spring, from frozen tundra to melting rivers and blossoming Arctic flowers. Join us under the glow of 24-hour sunshine on the ultimate scenic and wildlife safari.

ITINERARY

Day 1 • Travel to Arctic Bay. Upon arrival, meet your Expedition Leader and transfer to hotel.

Day 2 • After breakfast, travel by snowmobile and qamutik (traditional Inuit sled) to our Premium Safari Camp near the floe edge. Settle in to camp and take in the incredible mountains, icescapes and picturesque scenery that surrounds you.

Days 3-6 • Witness the wonder of the floe edge. Capture stunning photographs of magnificent

wildlife including pods of beluga and narwhal, and polar bears. Enjoy activities including kayaking and snorkeling along the floe edge, hiking and iceberg exploring.

Day 7 • Travel back to Arctic Bay and enjoy leisure time exploring the local community, and a cultural presentation by Inuit throat singers. Overnight at Arctic Bay hotel.

Day 8 • Transfer to the Arctic Bay airport for your flight to Iqaluit and onward to Ottawa.

DURATION

8 Days / 7 Nights

DEPARTURE DATES

June

FLIGHT PACKAGE

Round-trip flights from Ottawa to Arctic Bay

LOCATION

Arctic Bay, Nunavut

KINGS OF THE ARCTIC

POLAR BEARS, WHALES & WALRUS

Witness the kingdom of majestic polar bears, bowhead whales and walrus.

In the heart of Canada's high Arctic and surrounded by captivating scenes of glistening ice and mirror-smooth waters, this region draws in whales, polar bears and walrus for unsurpassed close-up wildlife viewing and photography opportunities in summer.

Explore by boat, the spectacular Northern environment of Foxe Basin that is brimming with electric blue pack-ice formations and magnificent wildlife. Capture unique wildlife and landscape photography under the magical glow of the midnight sun, where dusk moves directly into dawn. With almost 24-hours of sunshine, each sunset is followed by a nearly immediate sunrise, creating a dramatic play of light and shadow across the ice and open sea — a photographer's delight.

ITINERARY

Day 1 • Travel to Igloolik, Nunavut. Upon arrival, meet your Expedition Leader and guide team, and transfer to camp.

Days 2-6 • Take daily boat rides on the Arctic Ocean in search of bowhead whales, polar bears and walrus. Spend the days observing and capturing stunning photographs of wildlife, including walrus pods with mothers and babies, bowhead whales, seals, polar bears and birds.

Breathe in fresh Arctic air while admiring awe-inspiring scenery, including vibrant wildflowers that bloom during the summer months — all under the midnight sun.

Enjoy picnics on floating ice pans and potential excursions to ancient Thule and modern-day Inuit settlements.

Day 7 • After breakfast, travel back to Igloolik before catching your flight to Ottawa, via Iqaluit.

DURATION

7 Days / 6 Nights

DEPARTURE DATES

July

FLIGHT PACKAGE

Round-trip flights from Ottawa to Igloolik

LOCATION

Igloolik, Nunavut



Photo: David Briggs



Photo: David Briggs

POLAR BEARS & GLACIERS OF BAFFIN ISLAND

POLAR BEARS & BOWHEAD WHALES

Experience the unparalleled majesty of the Canadian Arctic in summer on the only land-based trip of its kind.

See majestic polar bears swimming amongst icebergs and possibly even bowhead whales, up-close and in their wild, unspoiled natural habitat. Experience the long, mild days of Arctic summer and seemingly endless sunsets. Explore by land and boat, and take in the exceptional beauty of the glacier-capped coastline of Baffin Island and Auyuittuq National Park.

An exclusive opportunity, excellent for families, adventurers, and photographers who appreciate rare wildlife sightings – found only in the Arctic!

ITINERARY

Day 1 • Upon arrival in Qikiqtarjuaq, transfer to a waiting boat for a 60-minute ride through scenic channels between islands to our Premium Safari Camp.

Days 2-6 • Take day trips by boat to Auyuittuq National Park, where you can hike at the base of the Coronation Fiord, as well as a trip to the Penny Ice Cap Glacier. Sample fresh Arctic char right in camp, pick wild blueberries, enjoy kayaking amongst spectacular ice formations, and possibly

visit an ancient Thule site.

Get the chance to observe wildlife including bowhead whales and polar bears, and possibly visit a newly discovered bowhead molting site.

Day 7 • After breakfast, head back to Qikiqtarjuaq by boat. Transfer to the airport for your flight home.

DURATION

7 Days / 6 Nights

DEPARTURE DATES

August

FLIGHT PACKAGE

Round-trip flights from Ottawa to Qikiqtarjuaq

LOCATION

Qikiqtarjuaq, Nunavut

POLAR BEAR MIGRATION FLY-IN

PHOTO SAFARI

This exclusive cabin-based photo safari is specially designed to get you close to one of the world's most magnificent predators in their natural habitat.

Fly by private charter, along the west coast of Hudson Bay from Churchill, MB. On this short, 50-minute flight, a lucky few may even get a chance to view and photograph Arctic wildlife from above. Strategically located in “polar bear alley”, our Polar Bear Cabins site is situated directly in the path of polar bears as they search for the first sea ice forming on the bay. Get the opportunity to safely photograph polar bears at ground level, behind an unobtrusive electric fence. Polar bears are known to wander right up to the fence!

ITINERARY

Day 1 • Arrive in Winnipeg and spend the night in a 4-star boutique hotel attached to the Winnipeg airport.

Day 2 • Depart for Churchill, MB. Upon arrival, board the private charter for a 50-minute flight to the Polar Bear Cabins. Keep an eye out for possible views of caribou roaming the tundra below!

Days 3-6 • Spend time observing and photographing polar bears and other Arctic wildlife, including Arctic hare, Arctic fox, pine martens, willow ptarmigan, snowy owls, gyrfalcons and wolverines in the wild, while admiring the stunning natural landscapes. Safely see and photograph

polar bears from ground-level within the Polar Bear Cabins complex, from behind an unobtrusive electric fence, and take short treks over the frozen tundra with seasoned Inuit guides. Guides will get you as close to polar bears as safely possible for extraordinary viewing and photographs.

Delight in the magical Northern Lights at night. Weather permitting.

Day 7 • Capture a few last shots in the morning before flying back to Churchill, and then Winnipeg, where you will spend the night.

Day 8 • Depart Winnipeg for home.

DURATION

8 Days / 7 Nights

DEPARTURE DATES

October & November

FLIGHT PACKAGE

Round-trip flights from Winnipeg to Churchill

LOCATION

Remote camp 110 km south of Arviat, Nunavut



ARCTIC KINGDOM

Arctic Kingdom Inc.
PO Box 6117, Iqaluit, NU X0A 0H0 Canada

Canada Direct: +1 416-322-7066
Toll Free: 1-888-737-6818

UK: +44 203 393 7727
DE: +49 308 967 79101

adventures@arctickingdom.com

www.arctickingdom.com



[/arctickingdom](https://www.facebook.com/arctickingdom)



[@ArcticKingdomExpeditions](https://www.instagram.com/ArcticKingdomExpeditions)



[@ArcticKingdom](https://www.twitter.com/ArcticKingdom)

